



# Dura Life<sup>®</sup> On-Farm Containment

*Designed specifically to meet the farm fuel containment requirements.*



**EPA Compliant • Durable • Cost Effective**

Dura Life<sup>®</sup>  
CONTAINMENT  
Systems

855-DUR-LIFE (855-387-5433)  
[www.farmcontainment.com](http://www.farmcontainment.com)



Scan with your smartphone  
to view the website.

# Advantages

## Why Dura Life® On-Farm Containment?

If your total combined fuel storage on your farm is 1320 gallons or over, the EPA requires containment in case of a fuel spill.

Dura Life® has developed a fuel spill containment system that allows you to comply with the EPA Spill Prevention Control and Containment law.

Dura Life® has developed a unique product, which expressly meets the farm fuel containment requirements. The Dura Life Containment System is designed for a simple installation using standard tools.

- Meets or exceeds EPA requirements for SPCC ruling on fuel containment.
- Developed and manufactured specifically for the farm community.
- Installation is a simple process, with easy-to-follow steps.



## Dura Life® Advantage Built to Last and Cost Effective

### Built to Last

Each Containment system is professionally engineered, using Finite Element Analysis (FEA). This process efficiently pinpoints and eliminates stress points, producing the most environmentally safe system in the industry.

### Committed to Exceed All Environmental Regulations

Our professional engineers designed the systems to exceed the Environmental Protection Agency (EPA) Standards and EUB (G55) regulations for oil spill prevention and countermeasures.

### Durable

The first in the industry to engineer and develop the steel concept for secondary containment, we use only the highest quality, chemically treated, galvanized steel. The 65,000 PSI, heavy-duty 10 and 12 Gauge corrugated steel construction resists rust and corrosion even in the harshest environments.

### Dependable

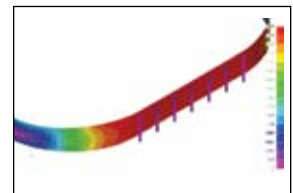
Our steel systems ensure longevity, by forming each sidewall sheet with flanged tops and double bolted seams, providing twice the strength while maintaining sidewall shape and failsafe seals. To prevent further leakage when, and if, a spill occurs, our high-grade liners are expertly sealed at each seam.

### Expandable

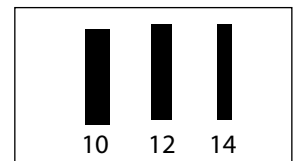
Expansions and modifications to an existing system is easily done by adding more panels and liners.

### Completely Reusable

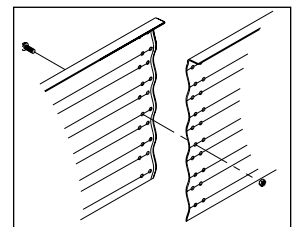
Dura Life Containment Systems can be easily disassembled, moved and reassembled to a new site, making relocating easy.



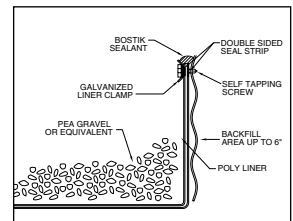
FEA Analysis



Steel Gauge Thickness



Easy Bolt Together System



Polyliner Detail

Required: either 2" sand or geotextile layer below liner. May also be required above, depending on liner material.

# System Options

## Dura Life® Farm Containment Systems

### Dura Life® Dynamic Loading Secondary Containment System

Dynamic Loading Containment Systems are designed and manufactured to contain an entire load if a catastrophic rupture were to occur.

- The strongest containment system on the market today without a single reported failure in the entire history of the brand.
- Designed by professional engineers that utilize state-of-the-art Finite Element Analysis tools to scrutinize every component in order to maximize durability and increase strength.
- Built with 10 and 12 gauge steel walls and patented Z-posts set in concrete that protects the structure from frost heave.
- Support posts are galvanized steel material. The Z-posts provide added strength for the containment ring structure. Installation detail in regards to the post footings are dictated by site's soil condition.



Dynamic Loading Containment System

### Dura Life® Ground Guard Zero Ground Disturbance Containment System

Created exclusively for above ground installations, the Ground Guard requires zero ground penetration and is a perfect alternative for areas where underground systems are not an option.

- These containment systems require ZERO ground penetration and/or disturbance - taking away timely site identification that is typically needed when installing systems requiring post holes set in concrete.

### Panel Heights

- Wall panels are available in 25", 33" or 45" heights.
- Higher wall height allows system to accommodate the sites with limited space available.



Zero Ground Disturbance Containment System

### A Product You Can Trust

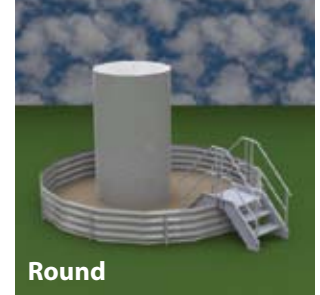
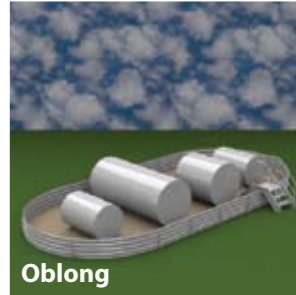
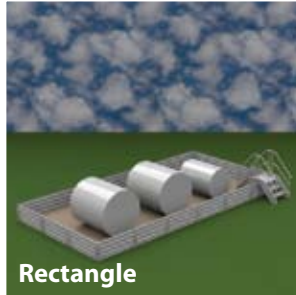
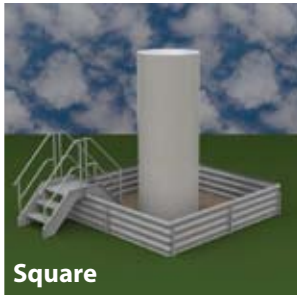
Dura Life® On-Farm Containment provides you with long term dependability that you can trust in. On the farm, or out in the oil and gas fields, Dura Life® Containment Systems have stood the test of time for over 20 years.



# System Shapes & Color Options

## Dura Life® System Shapes

Dura Life® Farm Containment System's flexibility provides the availability of various configurations for single or multiple tank sites.



### Custom Site Creation

Custom Containment Systems fit anywhere, allowing tight installations between structures possible. Our custom corner systems can be installed with as many as 14 different angles to work around corner obstacles such as pipes, buildings and control equipment. Painted systems are available to blend in with the environment or establish a continuous look with other structures on site or to blend with the natural environment for an aesthetic and professional appearance.

## Dura Life® Painted Containment Powder Coated Color Finishing

### What is powder coating?

Powder coating is a dry finish process that uses finely ground powders of pigment and resin to coat the surface. Powder coating uses an electrostatic charged technique in which the powders are charged so that powder particles adhere to the metal surface and are then melted and fused together in the curing process.

### Why powder coating?

Powder coating is significantly more durable than conventional paints. It is extremely resistant to chips, scratches, fading and wearing than other finishes. Also, corrosion resistance properties are difficult to achieve with other methods or materials. Powder coating is environmentally friendly and there are no solvents or hazardous material used.

#### Standard Environmental Colors

Carlsbad Canyon	Covert Green	Shadow Gray
Juniper Green	Shale Green	Sudan Brown
Beetle	Yuma Green	Carob Brown

#### Popular Custom Colors

White	Gray
Blue	Red

For special order colors, please call for price and availability.

**For More Information Contact Us Today.**

**1-855-DUR-LIFE** (1-855-387-5433)  
**www.farmcontainment.com**