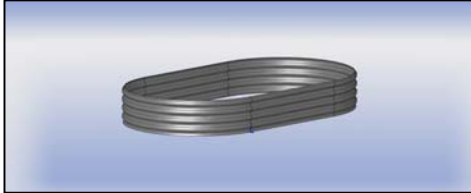


Dura Life Secondary Farm Containment Z (In Ground) Posts

***** All configurations include 25" tall, 12 ga. wall panels, "Z" (in ground) posts, all hardware and 30 mil liner.*****

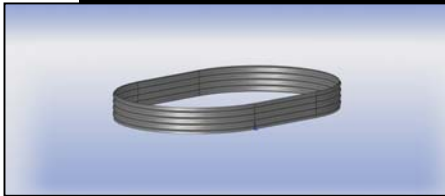
The following secondary containment systems are only a small sample of possible configurations. We can provide a multitude of custom configurations and quotes.

PART NO. SFC25120611 - OBROUND 6FT X 11FT



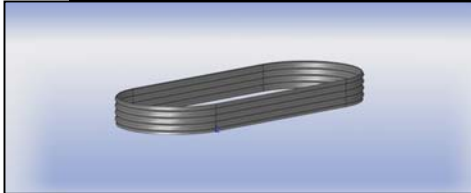
Capacity (Gallons)	558
--------------------	-----

PART NO. SFC25120914 - OBROUND 9FT X 14FT



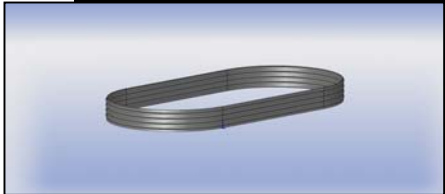
Capacity (Gallons)	1046
--------------------	------

PART NO. SFC25120615 - OBROUND 6FT X 15FT



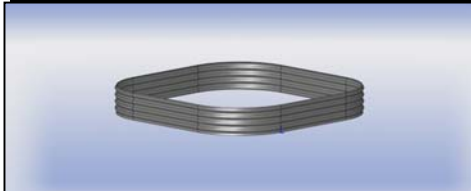
Capacity (Gallons)	837
--------------------	-----

PART NO. SFC25120918 - OBROUND 9FT X 18FT



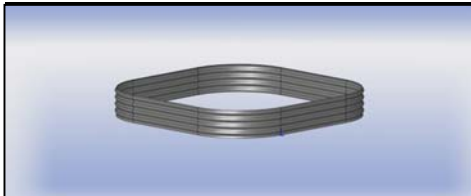
Capacity (Gallons)	1464
--------------------	------

PART NO. SFC25121111 - ROUND CORNER 11FT X 11FT



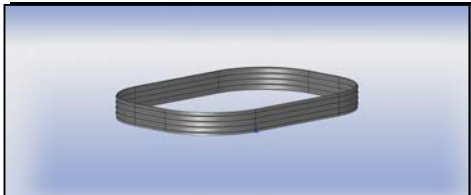
Capacity (Gallons)	1056
--------------------	------

PART NO. SFC25121515 - ROUND CORNER 15FT X 15FT



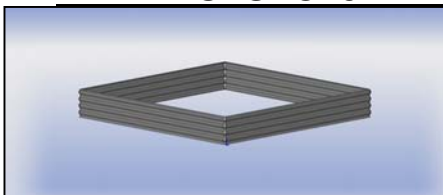
Capacity (Gallons)	2271
--------------------	------

PART NO. SFC25121115 - ROUND CORNER 11FT X 15FT



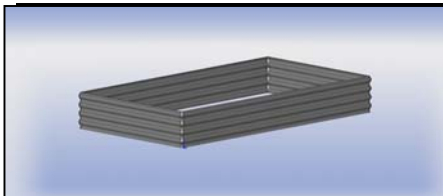
Capacity (Gallons)	1554
--------------------	------

PART NO. SFC251211SQR - SQUARE 11FT X 11FT



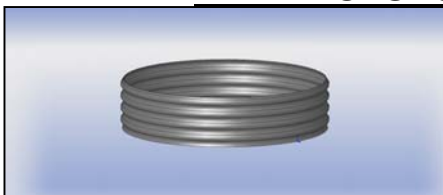
Capacity (Gallons)	1100
--------------------	------

PART NO. SFC25120611RCT - RECTANGLE 6FT X 11FT



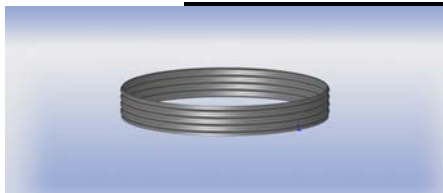
Capacity (Gallons)	600
--------------------	-----

PART NO. SFC251206 - ROUND 6FT



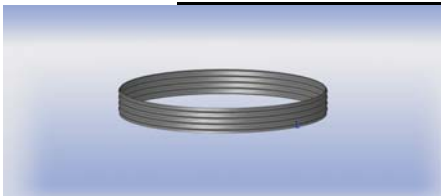
Capacity (Gallons)	279
--------------------	-----

PART NO. SFC251209 - ROUND 9FT



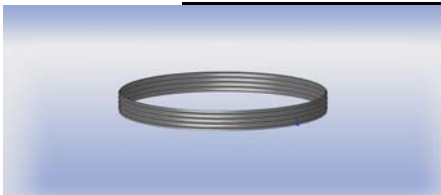
Capacity (Gallons)	627
--------------------	-----

PART NO. SFC251212 - ROUND 12FT



Capacity (Gallons)	1116
--------------------	------

PART NO. SFC251215 - ROUND 15FT



Capacity (Gallons)	1744
--------------------	------

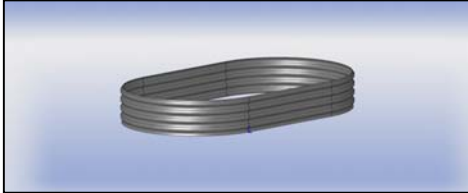
Note: Capacities listed above account for 1" free board at the top of the system and for a combined 8" of engineer fill above and below the liner. If panel embedment is needed, due to non-cohesive soils, capacities will be further reduced. Contact local authorities for free board requirements in your area. Free board requirements are to be based on 25yr/24hr average rainfall amounts. Contact local authorities also regarding required clearance distances between fuel tanks and containment side walls.

Dura Life Secondary Farm Containment ZGD (Zero Ground Disturbance) Posts

All configurations include 25" tall, 12 ga. wall panels, ZGD (zero ground disturbance) posts, all hardware and 30 mil liner.

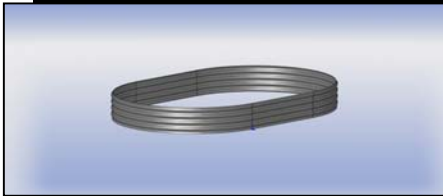
The following secondary containment systems are only a small sample of possible configurations. We can provide a multitude of custom configurations and quotes.

PART NO. SFC25120611ZGD - OBROUND 6FT X 11FT



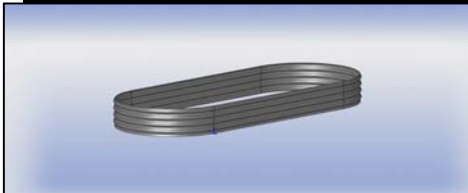
Capacity (Gallons)	558
--------------------	-----

PART NO. SFC25120914ZGD - OBROUND 9FT X 14FT



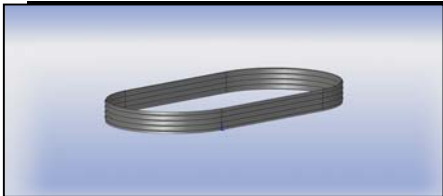
Capacity (Gallons)	1046
--------------------	------

PART NO. SFC25120615ZGD - OBROUND 6FT X 15FT



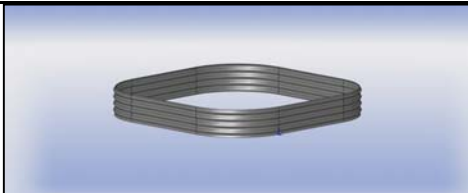
Capacity (Gallons)	837
--------------------	-----

PART NO. SFC25120918ZGD - OBROUND 9FT X 18FT



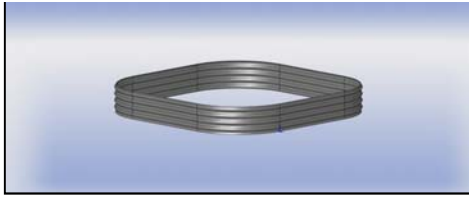
Capacity (Gallons)	1464
--------------------	------

PART NO. SFC25121111ZGD - ROUND CORNER 11FT X 11FT



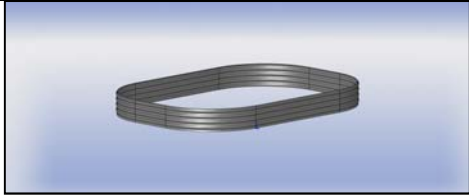
Capacity (Gallons)	1056
--------------------	------

PART NO. SFC25121515ZGD - ROUND CORNER 15FT X 15FT



Capacity (Gallons)	2271
--------------------	------

PART NO. SFC25121115ZGD - ROUND CORNER 11FT X 15FT



Capacity (Gallons)	1554
--------------------	------

Note: Capacities listed above account for 1" free board at the top of the system and for a combined 8" of engineer fill above and below the liner. If panel embedment is needed, due to non-cohesive soils, capacities will be further reduced. Contact local authorities for free board requirements in your area. Free board requirements are to be based on 25yr/24hr average rainfall amounts. Contact local authorities also regarding required clearance distances between fuel tanks and containment side walls.